



14 Blacknest Business Park
Blacknest, Nr. Alton. Hampshire. GU34 4PX
Tel: 01420 23930 Fax: 01420 23921
sales@acic.co.uk http://www.acic.co.uk



ACIC INTERNATIONAL

The systems are primarily designed to accurately record real-time track-side events from signals, such as interlocking relays, AHBs, track circuits and points to provide post incidence history data, and condition monitoring. With the inclusion of Analogue Data Loggers, the system is able to monitor such measurements as track temperature, current imbalance and rail head contamination. The data is stored in pre-formatted daily and hourly files that are completely compatible with similar systems and standard replay programmes.

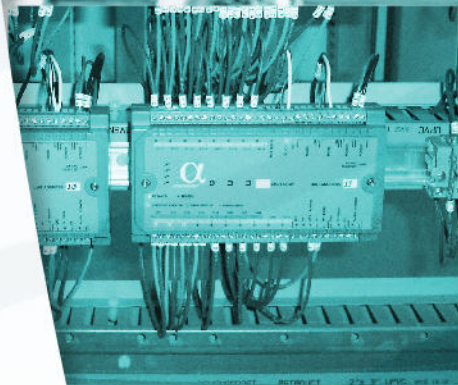
The signal data can be displayed in real-time on the system monitor, particularly useful during commissioning and installation. The displays are standard image files which can be customer designed using standard windows applications. The displays can then be animated using easy to configure text based .csv files generated from Excel.

The current issue of software allows for up to 8 maps. The main page display has pop up windows for the last ten events, last ten alarms and a digital display of every channel on the system.

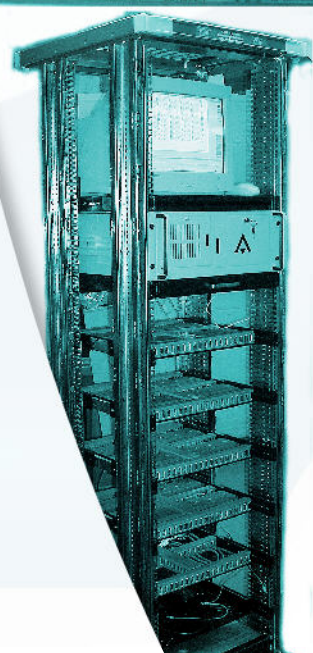
Alarms can be generated by matching events times against predicted times.

The systems are supplied complete, built into 19" cabinets, ready to be connected to inputs.

Watchdogs are now available as optional upgrades.



- | | |
|--|---|
| ✓ Interlockings, Relays, Points, AHBs & Track-Circuits | ✓ Preventative Maintenance & Condition Monitoring |
| ✓ On line Maps & Views | ✓ Up to 1782 channels per system |
| ✓ True Windows Application | ✓ Event Resolution & synchronisation to 1ms |



Track_Event Data Logger